

## LOW FREQUENCY SOLAR INVERTER PV3000 LVHM Series

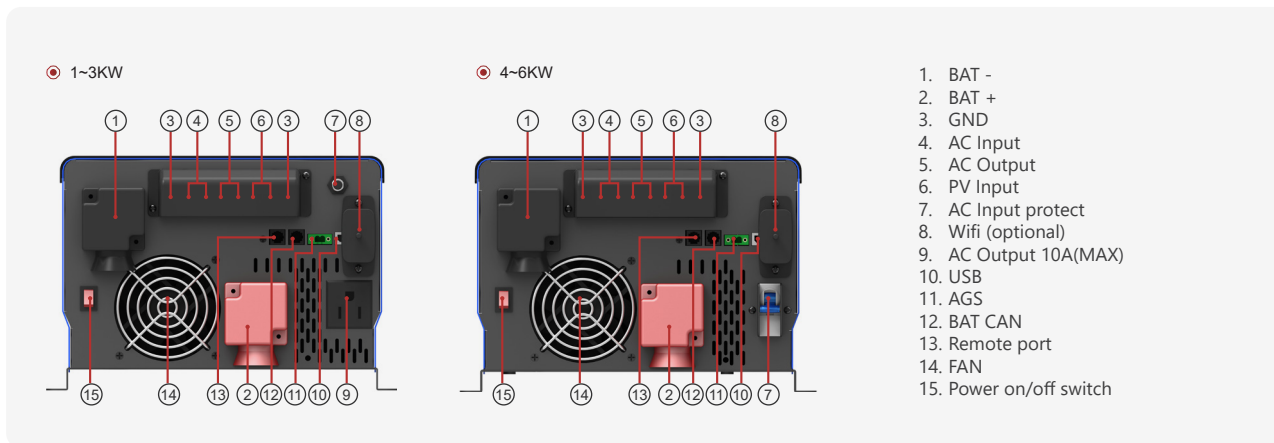
1~6KW | AC120V | MPPT 80A | WIFI | BAT-CAN

PV3000 LVHM series is very economical pure sine wave solar inverter, AC voltage 110V/120V, AC charger inbuilt, from 20A to 60A; MPPT solar charger 80A inbuilt; Solar/AC priority is configurable, when setting solar priority, solar will charge batteries as first priority, and AC can also charge batteries when solar charger current is not enough, it enables inverter to operate with all kinds of home appliances, widely selling to Latin America.

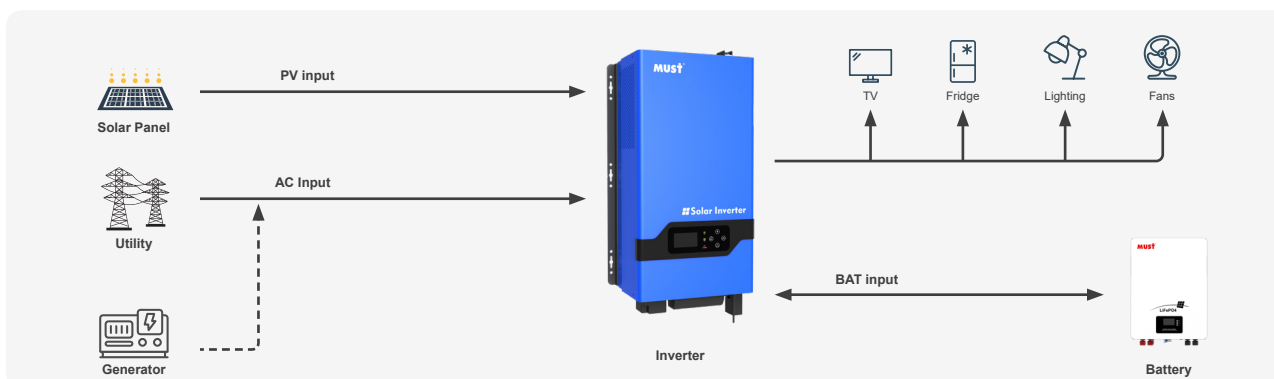


- Pure sine wave output
- 3 Steps charging
- Overload and short-circuit protection
- Set charging voltage/charging current.
- Battery low voltage shutdown point can be set to 10/10.5/11/11.5/12V
- Power-save mode
- Set utility priority/ Battery priority
- Set utility input wide/narrow range
- Inverter voltage can be set to 120V:110V/115V/120V
- Inverter frequency can be set to 50/60Hz
- Set utility charging on/off switch
- 80A MPPT charger
- Acid or Lithium Select
- WiFi port (optional)
- With BMS lithium battery communication function (CAN port)

### Back panel description



### Solar system connection



MODEL	PV30-1KW LVHM	PV30-1.5KW LVHM	PV30-2KW LVHM	PV30-3KW LVHM	PV30-4KW LVHM	PV30-5KW LVHM	PV30-6KW LVHM					
Nominal Battery System Voltage	12VDC   24VDC	12VDC   24VDC	12VDC   24VDC	24VDC   48VDC	24VDC   48VDC	48VDC	48VDC					
<b>INVERTER OUTPUT</b>												
Rated Power	1 KW	1.5 KW	2 KW	3 KW	4 KW	5 KW	6 KW					
Surge Rating	3000VA	4500VA	6000VA	9000VA	12000VA	15000VA	18000VA					
Capable Of Starting Electric Motor	1HP	1HP	1.5HP	1.5HP	2HP	3HP						
Waveform	Pure sine wave / same as input (bypass mode)											
Nominal Output Voltage RMS	110V / 115V / 120VAC(±10% RMS)											
Output Frequency	50Hz / 60Hz ±0.3Hz											
Inverter Efficiency (Peak)	>88%											
Line Mode Efficiency	>95%											
Power Factor	1.0											
Typical Transfer Time	10ms(max)											
Overload	100% < Load < 110% (alarm 5min then stop output and fault code 07) 110% < Load < 125% (alarm 60s then stop output and fault code 07) Load > 125% (alarm 10s then stop output and fault code 07)											
<b>AC INPUT</b>												
Voltage	110/120VAC											
Selectable Voltage Range	75~135VAC (For personal computers)											
Frequency Range	50Hz / 60Hz(Auto sensing) 40~80Hz											
<b>BATTERY</b>												
Minimum Start Voltage	(10V/ 10.5V/ 11V/ 11.5V/ 12V )+0.5V for 12VDC mode (*2 for 24VDC, *4 for 48VDC)											
Low Battery Alarm	(10V/ 10.5V/ 11V/ 11.5V/ 12V )+0.5V for 12VDC mode (*2 for 24VDC, *4 for 48VDC)											
Low Battery Cut Off	10V/ 10.5V/ 11V/ 11.5V/12V for 12VDC mode (*2 for 24VDC, *4 for 48VDC)											
High Voltage Alarm	(12-14.5V)+1V for 12VDC mode (*2 for 24VDC, *4 for 48VDC)											
High Battery Voltage Recover	(12-14.5V)+0.5V for 12VDC mode (*2 for 24VDC, *4 for 48VDC)											
Idle Consumption-Search Mode	Load ≤50±20W(120V)											
<b>CHARGER</b>												
Output Voltage	Depends on battery type											
Overcharge Protection S.D.	15.7VDC for 12VDC mode (*2 for 24VDC mode, *4 for 48VDC mode)											
Maximum Charge Current	30A	20A	45A	25A	60A	30A	40A	20A	60A	30A	35A	40A
<b>BYPASS &amp; PROTECTION</b>												
Input Voltage Waveform	Sine wave (grid or generator)											
Nominal Input Frequency	50Hz or 60Hz											
Overload Protection (SMPS Load)	Circuit breaker											
Output Short Circuit Protection	Circuit breaker											
AC input breaker	1-2K/30A			3K/40A			4-6K/63A					
<b>SOLAR CHARGER</b>												
Maximum PV Array Power	1250W	2500W	1250W	2500W	1250W	2500W	2500W	5000W	2500W	5000W	5000W	5000W
Maximum PV Charge Current	80A±4A											
DC Voltage	12V / 24V auto work				24V / 48V auto work							
MPPT Range @ Operating Voltage	15~95VDC @ 12V 30~230VDC @ 24V			30~230VDC @ 24V 60~230VDC @48V			60~230VDC @48V					
Maximum PV Array Open Circuit Voltage	245VDC											
Standby Power Consumption	<2W											
<b>MECHANICAL SPECIFICATIONS</b>												
Mounting	Wall Mount											
Machine Dimension (W*H*D)(mm)	303*493*200				305*531*202							
Package Dimension (W*H*D)(mm)	615*319*400				688*319*400							
N.W(kg)	/				/							
G.W(kg)	/				/							
<b>OTHER</b>												
Operation Temperature Range	0°C to 40°C											
Storage Temperature	-15°C to 60°C											
Audible Noise	60dB MAX											
Display	LED+LCD											
Standard Warranty	2 years											
<b>CERTIFICATION &amp; STANDARDS</b>												
/												

\*The technical specifications of this document are subject to change without any notice